

ImportCenter

User Manual and Import XML Specification

INFRA
LOGIC

www.infralogic.dk

Copyright and Trademarks

ControlCenter ImportCenter User Guide

Version 1.6

Sept 2014

Part number: CCXML 16

Copyright © 2010 by InfraLogic ApS.

All Rights Reserved. No part of this publication may be reproduced, stored in a retrieval system, or transmitted, in any form or by any means, electronic, mechanical, photocopying, recording, or otherwise, without the prior written permission of InfraLogic ApS

The information in this publication is provided for information only and is subject to change without notice.

InfraLogic ApS and its affiliates assume no responsibility or liability for any loss or damage that may arise from the use of any information in this publication. The software described in this book is furnished under license and may only be used or copied in accordance with the terms of that license.

PostScript are registered trademarks and PostScript 3 is a trademark of Adobe Systems Incorporated. Other brand or product names are the registered trademarks or trademarks of their respective holders.

<http://www.infralogic.dk>

InfraLogic ApS

Vinterbuen 12

DK-2750 Ballerup

Denmark

Telephone +45 4464 6531

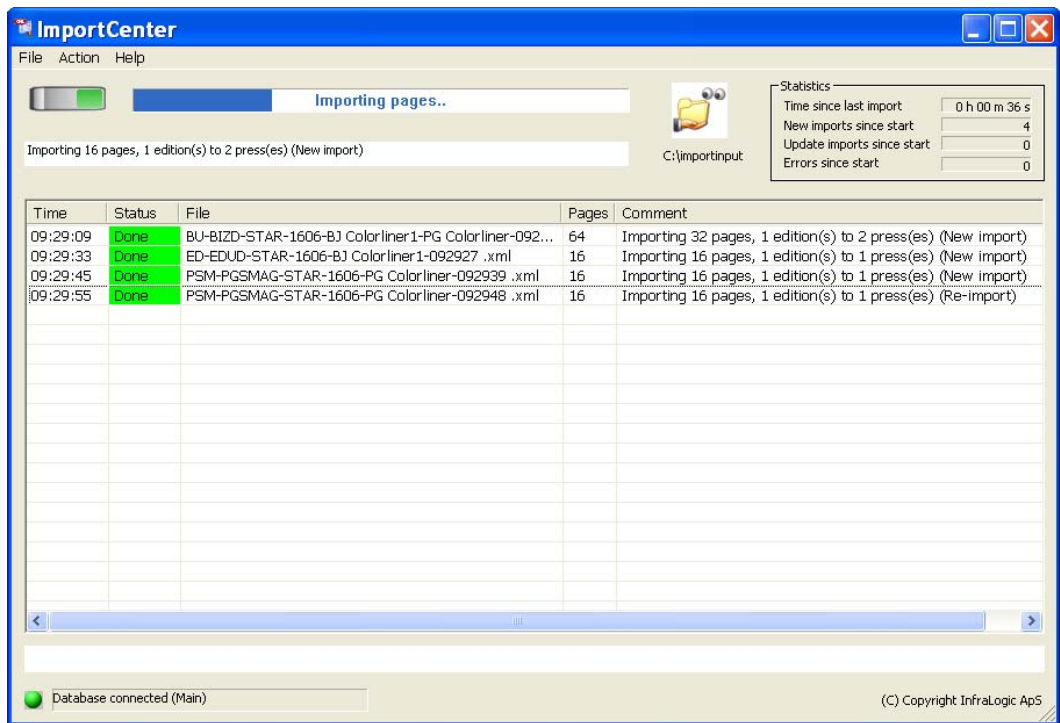
Table of Contents

1	Introduction.....	4
1.1	Typical ImportCenter setup.....	4
1.2	Partial and full XML plans	5
1.3	About this manual	5
2	Installation	6
3	Operation.....	8
3.1	Starting ImportCenter.....	8
3.2	Typical errors.....	8
3.3	Using the pop-up menu	9
4	Configuration	10
4.1	General preferences	10
4.1.1	Database connection.....	10
4.1.2	System Folders.....	11
4.1.3	Static defaults	11
4.1.4	Overrule import file settings.....	13
4.1.5	Miscellaneous settings	15
5	Import file specifications	16
5.1	Plan structure	16
5.1.1	XML format	18
5.1.2	Page naming	19
5.1.3	Multiple editions	19
5.1.4	Press position information in XML file	20
5.2	XML Attributes.....	21
5.3	XML data types	24
6	Appendix A XML Schema.....	26
7	Appendix B XML Example	30

1 Introduction

ImportCenter is an XML-based generic page plan importer for ControlCenter Enterprise. ImportCenter will scan an input folder for XML-documents and create or update plans in the ControlCenter database.

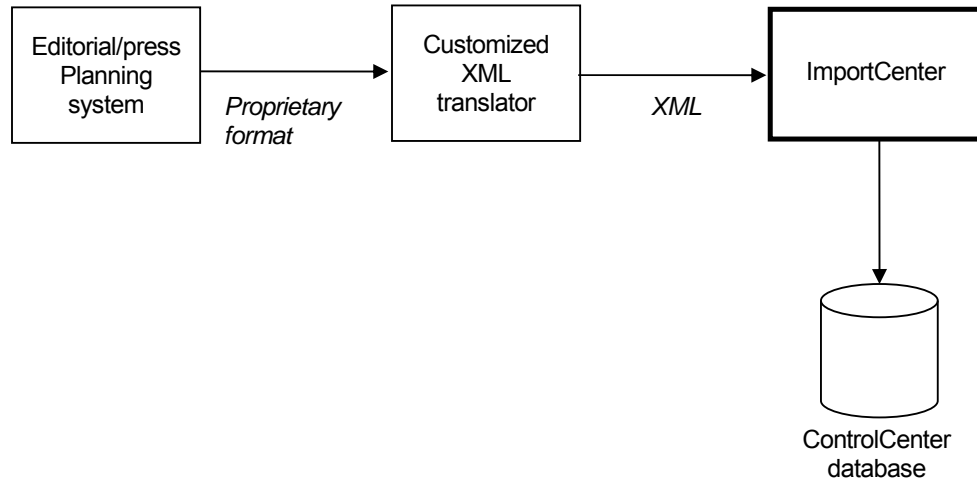
Despite the efforts to standardize pre-press planning information (IfraTrack and JDF initiatives), real world planning data are often customized. Native formats typically range from proprietary text-files, Excel-sheets and query-dumps from planning databases.



The InfraLogic XML plan format is organized hierarchically to reflect normal planning structure with levels publication/publication date on highest level followed by the description of each edition in the publication. In each edition a number of sections are described and in each section the pages are defined.

1.1 Typical ImportCenter setup

ImportCenter can use a plug-in for translation of non-standard file formats to the XML format following the ImportCenter schema. Currently a number of plug-in translators has been develop to convert plan data from JDF format and various native formats like EAE, ABB, MWM etc.



Instead of a dedicated plug-in within ImportCenter, often an external convert is implemented (usually by third party). The input to ImportCenter is a hot-folder, scanned at defined intervals. Incoming XML-files are validated and parsed. Based on present plans ImportCenter will either create the new plans or update existing plans (in case of plan updates).

Typically plan updates are sent to ImportCenter due to changes to press allocation, changed page count or color changes. It may also be an addition to the existing edition plan, e.g. additional regional editions.

1.2 Partial and full XML plans

There are two different versions of the XML plan files – partial plans and full plans.

A partial plan only describes the pages – no information is available about how pages are imposed and output. Partial plan typically originates from editorial systems or from the InfraLogic WebCenter client.

The idea behind partial page plans is to allow input and approval of pages as early as possible – before the final printing plan is known.

Note that the partial plan format allows specification of editioning (zones or timed editions) so that unique (required) pages and common pages can be described.

A full plan describes the pages and their output using sheet definitions in the XML file. The sheet definitions describes the imposition of the pages, on which press(es) to print and other output-related parameters.

1.3 About this manual

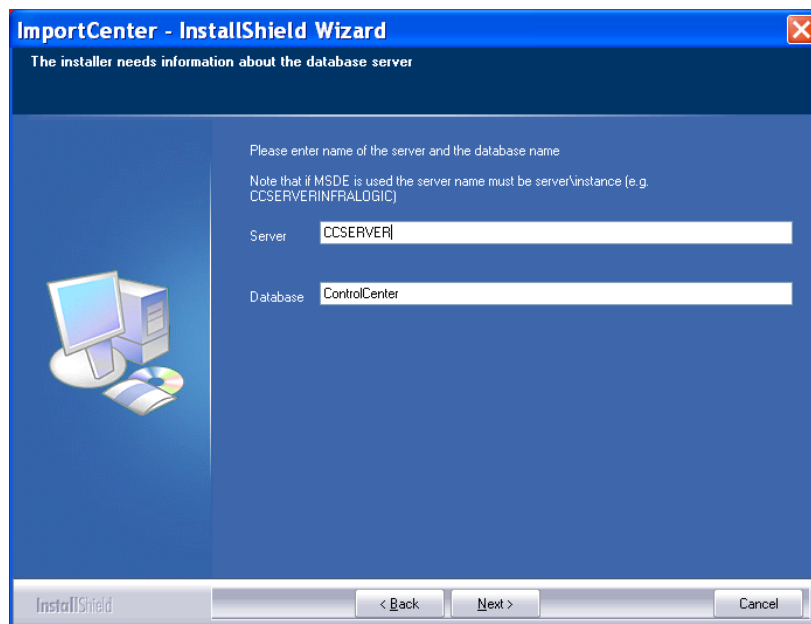
This manual is divided in two parts. The first part covers installation, configuration and operation of ImportCenter. The second part describes the XML schema and the organization of import data.

2 Installation

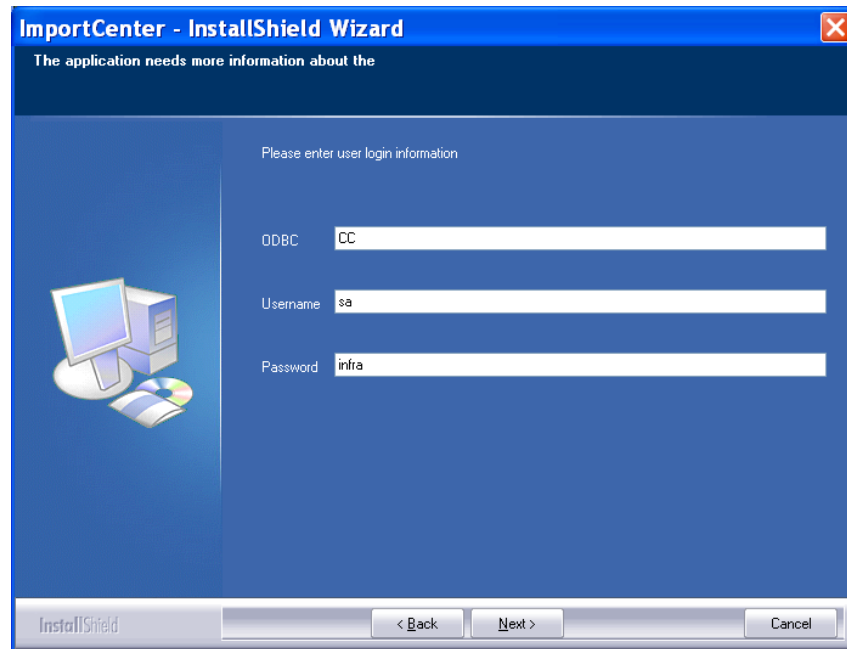
ImportCenter is easily installed using the install program. Insert the CD and wait for the launch of the installation main window. If it does not appear, start the Autorun.exe on the CD.



Click **Install ImportCenter** and click next until the asked for the database connection. Enter database server name and database name (Default ControlCenter). Click **Next**



and enter name of ODBC data source (default CC) database login details. The installer will automatically create an ODBC connection if it does not already exist. Click Next to finish the installation.



By default ImportCenter is installed to use the following folders:

Hot-folder: C:\ImportInput
Error-folder C:\ImportError
Done-folder C:\ImportDone

These defaults can be changed using the configuration menus in ImportCenter (see next chapter)

The configuration dialogs are accessed via the **Config** main menu.

3 Operation

ImportCenter is meant to run unattended scanning the hot-folder and importing incoming files.

3.1 Starting ImportCenter

If old import files are stored in the done-folder, ImportCenter will ask if the old files are to be deleted at program start. An option can turn off this prompt.

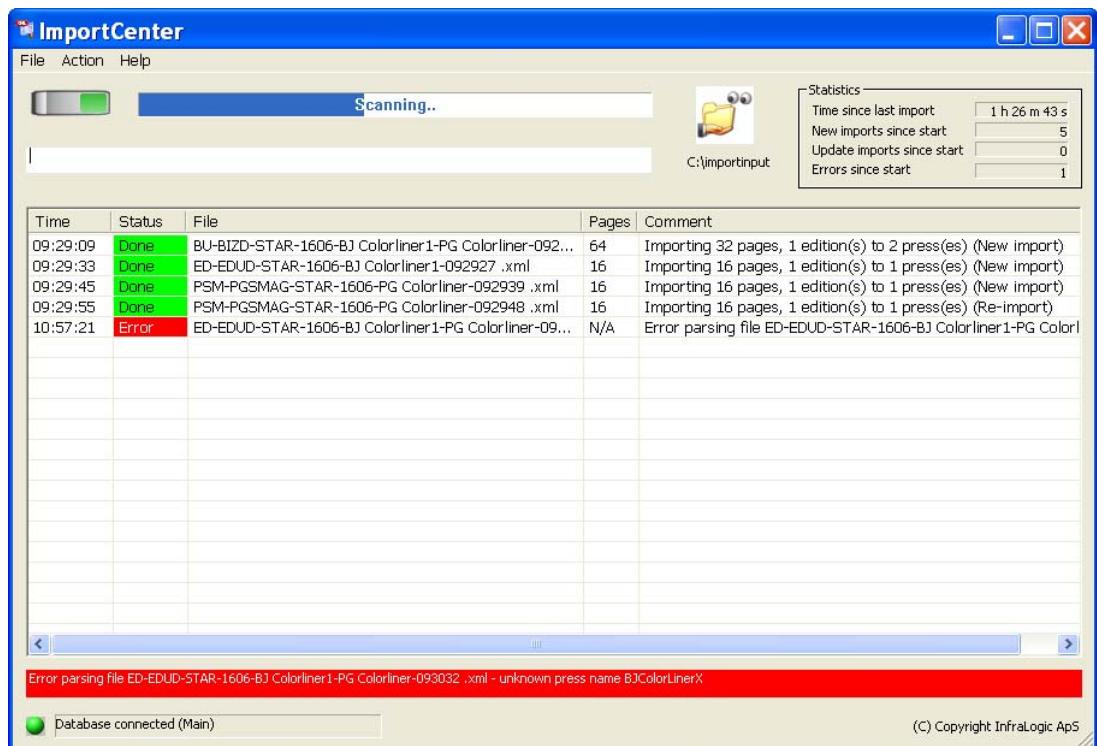
To start and stop ImportCenter press the Switch-button in the upper left hand corner. ImportCenter can be setup to auto-start the folder-scan once loaded.

The progress bar will go flash to indicate that the program is operating. All processed files will be logged in the log-list with Success / Error status.

3.2 Typical errors

ImportCenter performs a full XML-validation on any incoming files. Errors found may be caused by XML files not being well-formed or because names of Publications, sections, editions, templates etc. are unknown to the system.

A detailed error report will pinpoint which names are unknown to the system. Check in



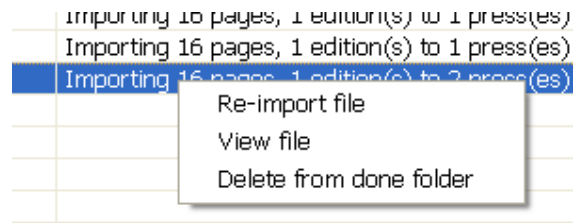
ImportCenter has detected an error. Here the press name is wrong. Use the pop-up to show and edit the XML file and re-import it. Notepad is the default editor.

ControlCenter for the correct naming.

3.3 Using the pop-up menu

A given XML file can be re-run, viewed or deleted from the done-folder using the right-click menu from the log-list.

Note that these features are only available if the done-folder is configured (see next chapter)



Highlight a line in the log and right-click to get to the pop-up menu

4 Configuration

4.1 General preferences

The configuration of ImportCenter is divided into the following sections: Database connection, System folders, Static defaults, XML overrule settings and Miscellaneous settings.

Go to File->General Preferences to adjust the config data:

4.1.1 Database connection

Enter valid ODBC source name and database user information.

In a backup server is available enter ODBC parameters for this server also.

In cases where multiple ODBC sources are used as backup switching, enter the backup ODBC as well and enter the IP-address of backup server running BackupCenter.

For backup schemes where only one (adjusted) ODBC source is used, the backup settings are not required.

4.1.2 System Folders

Enter the **XML Input folder** or select using the browse button.

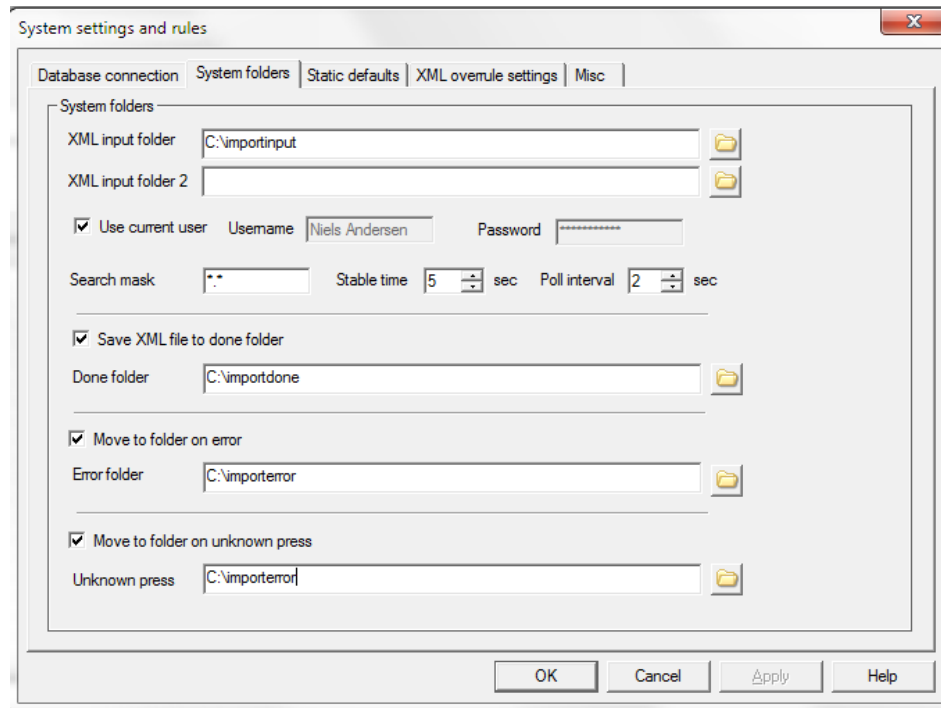
Also set **Search mask**, which is a filter indicating which file extensions to look for.

Stable time is the interval ImportCenter observes the file growth until it will try to lock the file.

Poll interval is simply the time ImportCenter sleeps between folder scans.

Save XML file to done folder. Enable this option to allow re-import of existing XML files from the ImportCenter popup-menu

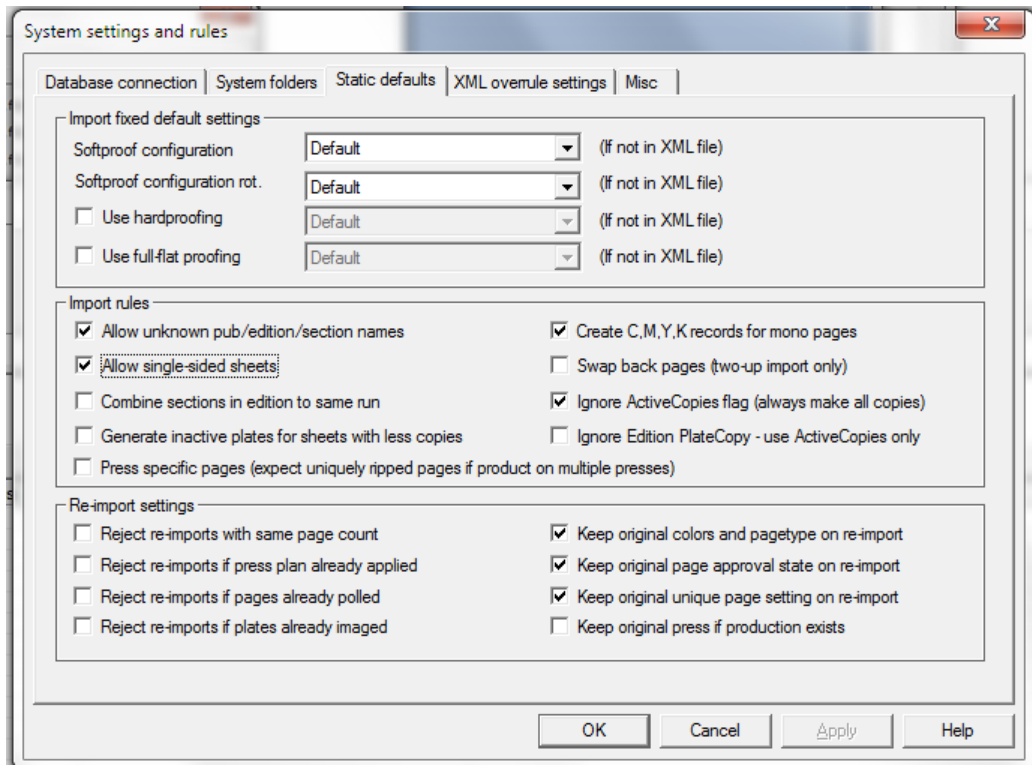
Move to folder on error. Enable this option to store XML-files with errors.



Move to folder on unknown press can be used to cascade multiple ImportCenters so that plan files with unknown press names can be routed to another ImportCenter serving that press.

4.1.3 Static defaults

Full detail is required by ImportCenter to create plans in ControlCenter. Parameters not present in the XML-document must be determined. A number of options dictate the behaviour in re-import cases.



Softproof configuration – select a soft proof generation profile from the list. Soft-proof configurations are defined in the *InputCenter* application

Use hardproofing – select to automatically generate hard proofs (paper proofs) of all pages in ControlCenter

Use full-flat proofing – select to automatically generate imposition proofs (full flats) of all pages in ControlCenter

Allow unknown pub/edition/section names – allows auto-create of unknown id names in ControlCenter database. Note that this will not utilize the publication default system in ControlCenter (described later)

Create C,M,Y,K records for mono pages option will generate all colors in the ControlCenter database but will only enable used colors. This (recommended) option allows operators in PlanCenter to change page colors without re-importing an updated XML file.

Allow single-sided sheets – for full plans the system normally require description of both front and back of sheets. Under certain circumstances this must be relaxed, e.g. for work-and-turn sheets.

Swap back pages – is a quick fix for correcting wrong backside sheets.

Combine sections in edition to same run option will allow multiple sections in the same press run. By default a press run holds only one section. For multi-ribbon presses this option may be required.

Press Specific Pages – set this option to generate plans where the same product is printed on multiple presses and the pages for each press are ripped individually (e.g. for different dot gain compensation). With this option not set a page is input once and the same physical page goes to all presses (no press specific ripping).

Ignore Active-copies flag – will ignore (and not require) the ActiveCopies parameters in sheet definition.

Generate inactive plates for sheets with less copies – will generate hidden placeholders for inactive copies (only relevant if previous flag is not selected)

Ignore Edition PlateCopy – will only use ActiveCopies setting for multiple plate copy generation.

Reject re-imports with same page count – will not import full or partial plan updates if page count is the same in all editions/sections. This setting is used where identical plans often are submitted many times from the input system. Note that this is a rather brutal rule – it will not allow update of unique/common page information in plan update files.

Reject re-imports if press plan is already applied – will reject any plan updates if the final press plan is already prepared in PlanCenter or through press plan import. Note that this will not allow partial plan updates of e.g. edition unique/common page information.

Eject re-imports if pages already polled - will reject plan updates if page input has begun for the particular production

Eject re-imports if plates already images - will reject plan updates if plate output has begun for the particular production

Keep original colors and pagetypes on re-import option will not update number of colors and single/panorama page type on re-import over existing plans. This option will keep manually edited plans changed in PlanCenter.

Keep original page approval state on re-import option will not update page approval flags in the database for already entered pages.

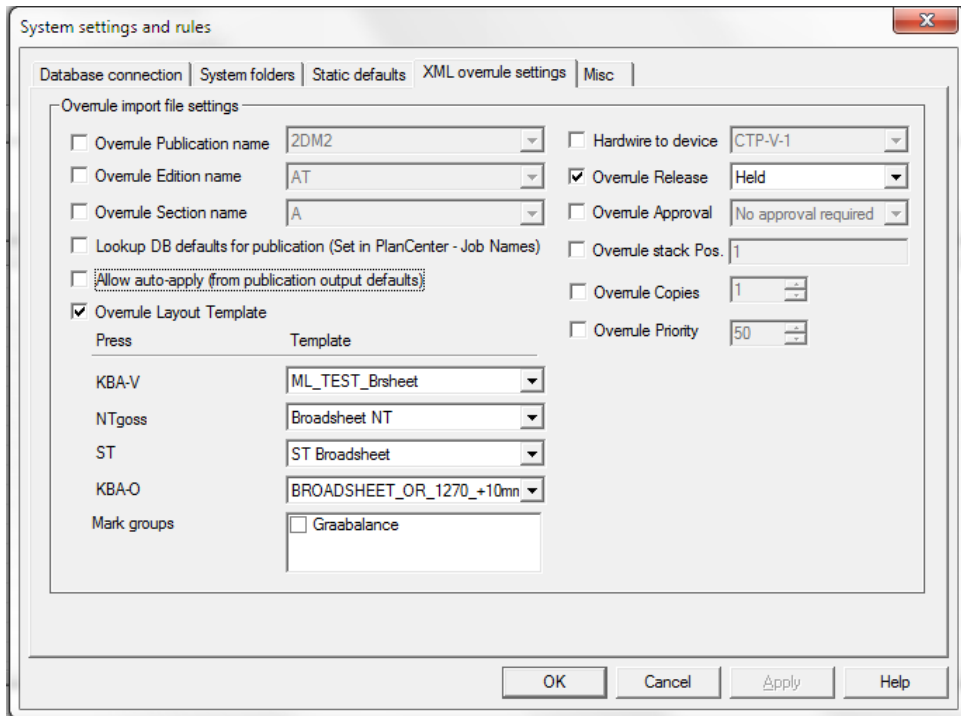
Keep original unique page settings on re-import option will not update unique/common page flags in the database. These flags may have been manually edited in PlanCenter to reflect changes.

Keep original press if production exists – will not alter press settings for updates. This may be required if press is selected/changed in PlanCenter manually.

4.1.4 Overrule import file settings

Overrule options are normally used in cases where the structure of products does not use e.g. issue names, edition names or section name (always uses the same name).

Overrule Publication, Issue, Edition and Section name options will ignore name(s) in the XML document and use the selected name(s) instead. Note that if Edition or section is overruled, only one edition/section can be included in the XML file.



Lookup DB defaults for publication - will use information related to publication names in the ControlCenter database. Each publication name can be linked to a number of defaults for that publication – e.g. Approval requirements, customer names, default press and output settings on each press (template etc.)

Allow auto-apply – when *Lookup DB defaults* is used, *ImportCenter* can auto-pair pages to sheets for two-up sheets.

Overrule layout template option will use a fixed layout for all files. The layout template determines page positions, plate marks, gutters etc. for front and back to sheets. The template must be specified per press.

IMPORTANT: For partial press set these template overrules pointing to a default one-up dummy template.

Hardwire to device option will pre-set the device name in the ControlCenter database. Normally the device name is determined at time of output only to allow load balancing between multiple devices.

Overrule release option will set production release/hold regardless of XML-file attributes.

Overrule approval option will set page approve mode (auto-approved or approval required) regardless of XML-file attributes.

Overrule stack pos. option will set a static plate stack position name in the database. Stacking position is typically put in a barcode to allow automated plate sorting.

Overrule copies option will generate the number of copies entered regardless of XML-file attributes.

Override priority option will set the priority (0-100) of pages regardless of XML-file attributes.

4.1.5 Miscellaneous settings

Ask to re-load done files at startup – will prompt to re-load the log grid at startup

Autostart on load – will autostart input folder scanning when ImportCenter is loaded

Run external command file on successful import – will fire a specified command file after import. This can be used to automate re-input of unknown files to InputCenter (re-input files arrived before the plan)

Run post import Stored Procedure - will run a custom database script after import (advanced topic – contact InfraLogic)

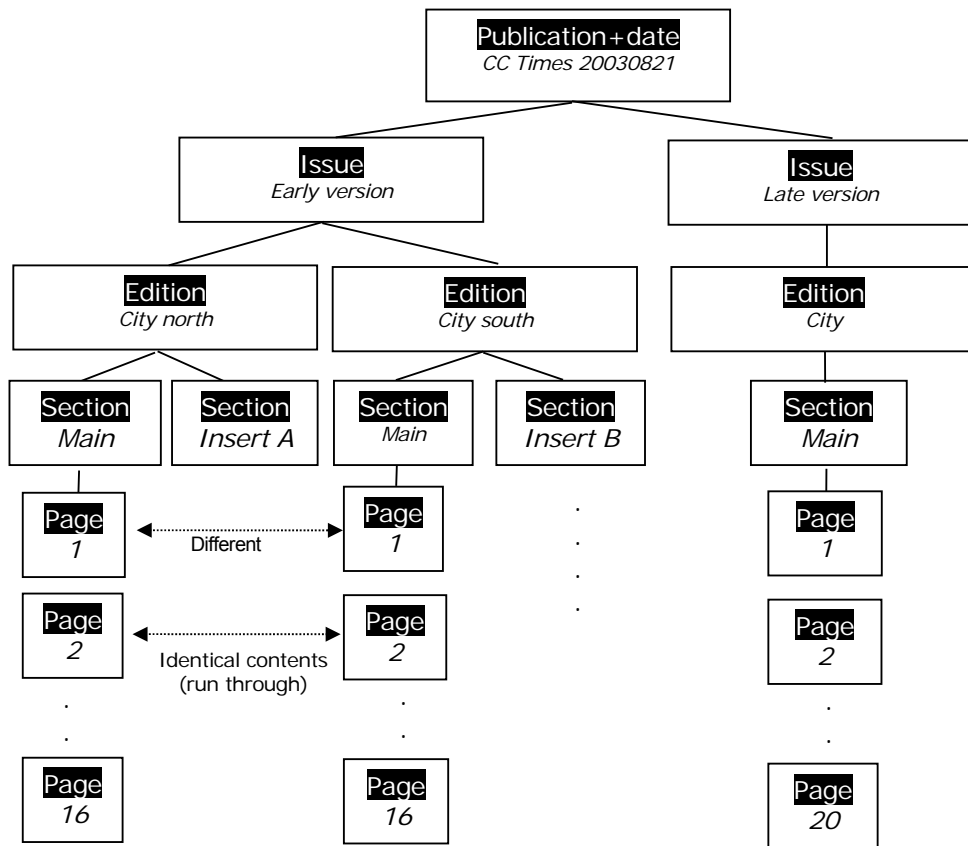
Send e-mail on import error – can send an email notification on errors

5 Import file specifications

The XML-document is organized hierarchically in the same way as ControlCenter with the publication name and publication date as highest organizational level. Each publication can have multiple issues (rarely used) and multiple editions (e.g. regional versions). Each edition may have one or more sections.

Sections are made up by pages which again are described as one or more color separations.

The figure below shows the layers in the product organization.



Product hierarchy handled by ControlCenter. **Note that often the Issue layer is not used.**

5.1 Plan structure

The XML schema file is found in appendix A and example files can be studied in appendix B.

The XML document must represent the tree-structure. Even if a certain level is not used, the XML-file must have a default for the level (e.g. Issue level = default name if not used).

In the example XML below there are two editions (Main and Local). First edition holds two sections (A and B). Inside each Section element is the page list for the section with Separation elements indicating colors for the page.

In the edition level (for full plans) the Sheet list also resides (not on section level – pages may be paired across sections). The sheet list consist of sheets with front and back items The *PageID* and *MasterPageID* attributes in each the Sheet element refer to a Page element

A large number of optional attributes can be set on Separation and Sheet elements.

```
<?xml version="1.0" encoding="utf-8" ?>
<Plan Version="1" UpdateTime="2005-03-18T09:55:32" Sender="Whoever"
      xmlns="http://tempuri.org/ImportCenter.xsd" >
  <Publication Name="News" PubDate="26-02-2005">
    <Issues>
      <Issue Name ="Final">
        <Editions>
          <Edition Name ="Main">
            <IntendedPresses>
              <IntendedPress Name="GOSS" Copies="10000" PlateCopies="1"
                PressTime="2005-04-03T01:00:00" />
            </IntendedPresses>
            <Sections>
              <Section Name ="A">
                <Pages>
                  <Page Name="1" Pagination="1" PageType="Normal" Unique="true" PageID="001"
                    Approved="0" Hold="1" Priority="50" Version="1" MasterPageID="001">
                    <Separations>
                      <Separation Name="C" />
                      <Separation Name="M" />
                      <Separation Name="Y" />
                      <Separation Name="K" />
                    </Separations>
                  </Page>
                  <Page Name="2" Pagination="1" PageType="Normal" Unique="true" PageID="002"
                    Approved="0" Hold="1" Priority="50" Version="1" MasterPageID="002">
                    <Separations>
                      <Separation Name="K" />
                    </Separations>
                  </Page>
                </Pages>
              </Section>
              <Section "B">
                ...
              </Section>
            </Sections>
            <Sheets>
              <Sheet PagesOnPlate="2" Template="GOSS Broadsheet pair" >
                <SheetFrontItems>
                  <SheetFrontItem PageID="016" MasterPageID="016" PosX="1" PosY="1" />
                  <SheetFrontItem PageID="001" MasterPageID="001" PosX="2" PosY="1" />
                </SheetFrontItems>
                <SheetBackItems>
                  <SheetBackItem PageID="002" MasterPageID="002" PosX="1" PosY="1" />
                  <SheetBackItem PageID="015" MasterPageID="015" PosX="2" PosY="1" />
                </SheetBackItems>
              </Sheet>
            </Sheets>
          </Edition>
          <Edition name="Local">
            .....
          </Edition>
        </Issues>
      </Issue>
    </Editions>
  </Publication>
</Plan>
```

Full plan format structure. Note the references from the sheet definition to the page definitions. This allows sheet descriptions of common/unique edition pages.

```

<?xml version="1.0" encoding="utf-8" ?>
<Plan Version="1" UpdateTime="2005-03-18T09:55:32" Sender="Whoever"
      xmlns="http://tempuri.org/ImportCenter.xsd" >
  <Publication Name="News" PubDate="26-02-2005">
    <Issues>
      <Issue Name ="Final">
        <Editions>
          <Edition Name ="Main">
            <IntendedPresses>
              <IntendedPress Name="GOSS" Copies="10000" PlateCopies="1"
                             PressTime="2005-04-03T01:00:00" />
            </IntendedPresses>
            <Sections>
              <Section Name ="A">
                <Pages>
                  <Page Name="1" Pagination="1" PageType="Normal" Unique="true"
                    PageID="001"
                    Approved="0" Hold="1" Priority="50" Version="1"
                    MasterPageID="001">
                    <Separations>
                      <Separation Name="C" />
                      <Separation Name="M" />
                      <Separation Name="Y" />
                      <Separation Name="K" />
                    </Separations>
                  </Page>
                  <Page Name="2" Pagination="1" PageType="Normal" Unique="true"
                    PageID="002"
                    Approved="0" Hold="1" Priority="50" Version="1"
                    MasterPageID="002">
                    <Separations>
                      <Separation Name="K" />
                    </Separations>
                  </Page>
                  .....
                </Pages>
              </Section>
              <Section "B">
                ...
              </Section>
            </Sections>
          </Edition>
          <Edition name="Local">
            .....
          </Edition>
        </Editions>
      </Issue>
    </Issues>
  </Publication>
</Plan>

```

Partial plan format structure follows the same structure as full plans with the absence of the <Sheets> element. Note that the partial plan still allows description of common edition pages through the use of MasterPageID attributes.

5.1.1 XML format

Beware of the following restrictions on the file input:

- Each XML document must hold data for a product as it is printed on one or more presses. If the product goes to multiple presses, an XML-plan can also be imported per press.
- Plan updates must be complete - ImportCenter must have the full edition plan each time. This implies that the XML file must hold all editions. The changes will be detected and handled when updating the internal database.

- The present version of ImportCenter does not require full information about the page pairing / imposition. If not present the file as called a *Partial plan*. For full plans the pairing information must be put in the <Sheets> element.
- All levels in the hierarchical structure must be present in the XML file (with the exceptions of the <Sheets> in partial plans. Any level not used must be included as “dummy” with a default name.

5.1.2 Page naming

Depending on the configuration of the InputCenter file recognition the expected file name may be required in the plan file (FileName attribute in <Page> element). If PlanPagNames are used in InputCenter the filename must be generated by the XML generator (except color information which is added by the RIP)

Example: FileName="KYTI-0310-A-003-14.pdf"

If planned page names are no required, the Filename attribute can be leaved out.

5.1.3 Multiple editions

Multiple editions must be put in the same XML-file. The editions may be zoned (regional) or timed (revisions) or a combination of these.

The main edition typically has only unique pages (all pages must be produced), whereas a later edition may have pages common with the main edition so certain plates may not have to be produced. Pages in sub-subsequent editions which are not unique must have the attribute Unique="false" and must have a MasterPageID reference to the main edition page (e.g. PageID="123" MasterPageID="012").

For timed editions it is further required that the edition sequence (chain of editions) is described. This is done using the attributes *TimedFrom* and *TimedTo*. *TimedFrom* points to the immediate ‘master’ edition and *TimedTo* pints to the next timed edition. For the first edtion *TimedFrom* is empty and for the last edition *TimedTo* is empty.

The attribute *EditionOrder* can specified the expected print sequence for each zone. Further if timed editions exists on multiple zones, the flag *ZoneMasterEdition* is set in regional zone editions to point to the equivalent timed edition in the main zone. Any page update in the main zone timed edition X will be sent to regional zones to the timed edition there where *ZoneMasterEdition* points to the main zone edition in question

Edition	TimedFrom	TimedTo	EditionOrder	ZoneMasterEdition
A1	(empty)	A2	1	
A2	A1	A3	2	
A3	A2	(empty)	3	
B1 (sub of A1)	(empty)	B2	1	A1
B2	B1	(empty)	2	A2

5.1.4 Press position information in XML file

Optional information about press plate positions can be embedded in the XML plan file. ControlCenter can propagate this information via plate texts and barcode to press personal.

Plate position information is held in the <Sheet> elements and consists of

Attribute PressTower: Press tower name – typically a number

Attribute PressZone: Press cylinder zone – plate position on a certain cylinder

Attribute PressHighLow: Two-around plate position round the cylinder

Element PressCylinders holding PressCylinder elements with color specific cylinder name

5.2 XML Attributes

Plan Element			
Attribute	Type	Description	Mandatory
Name	String	Plan name (sets OrderNumber in ControlCente database)	
ID	String	Plan ID (sets ControlCenter plan comment)	
Version	Integer	Plan version	X
UpdateTime	DateTime	Plan create time (format YYYY-MM-DDTHH-mm-SS)	
Command	String	Future expansion	X
Publication element			
Attribute	Type	Description	Mandatory
Name	String	Publication name	X
PubDate	Date	Publication date (format YYYY-MM-DD)	X
WeekReference	Integer	Week number – if set this must be specified in file names	
Issue Element			
Name	String	Issue name (rarely used)	X
Edition Element			
Attribute	Type	Description	Mandatory
Name	String	Edition name	X
IsTimed	Boolean	1: Edition is timed edition (not zoned). TimesFrom and TimesTo is required attributes if used 0: Edition is not timed (default)	
TimedFrom	String	Name of previous edition to used pages from (immediate master)	If IsTimed true
TimedTo	String	Name of next edition (if any) using pages from this edition	If IsTimed true
EditionOrderNumber	Integer	Edition sequence number	
ZoneMasterEdition	String	Edition name in main zone to get new pages from. Set on regional zones only (subeditions)	
EditionCopies	Integer	Number of plate copies for particular edition (default 1 if not present)	
Intended press attributes			
Attribute	Type	Description	Mandatory
Name	String	Press name	X

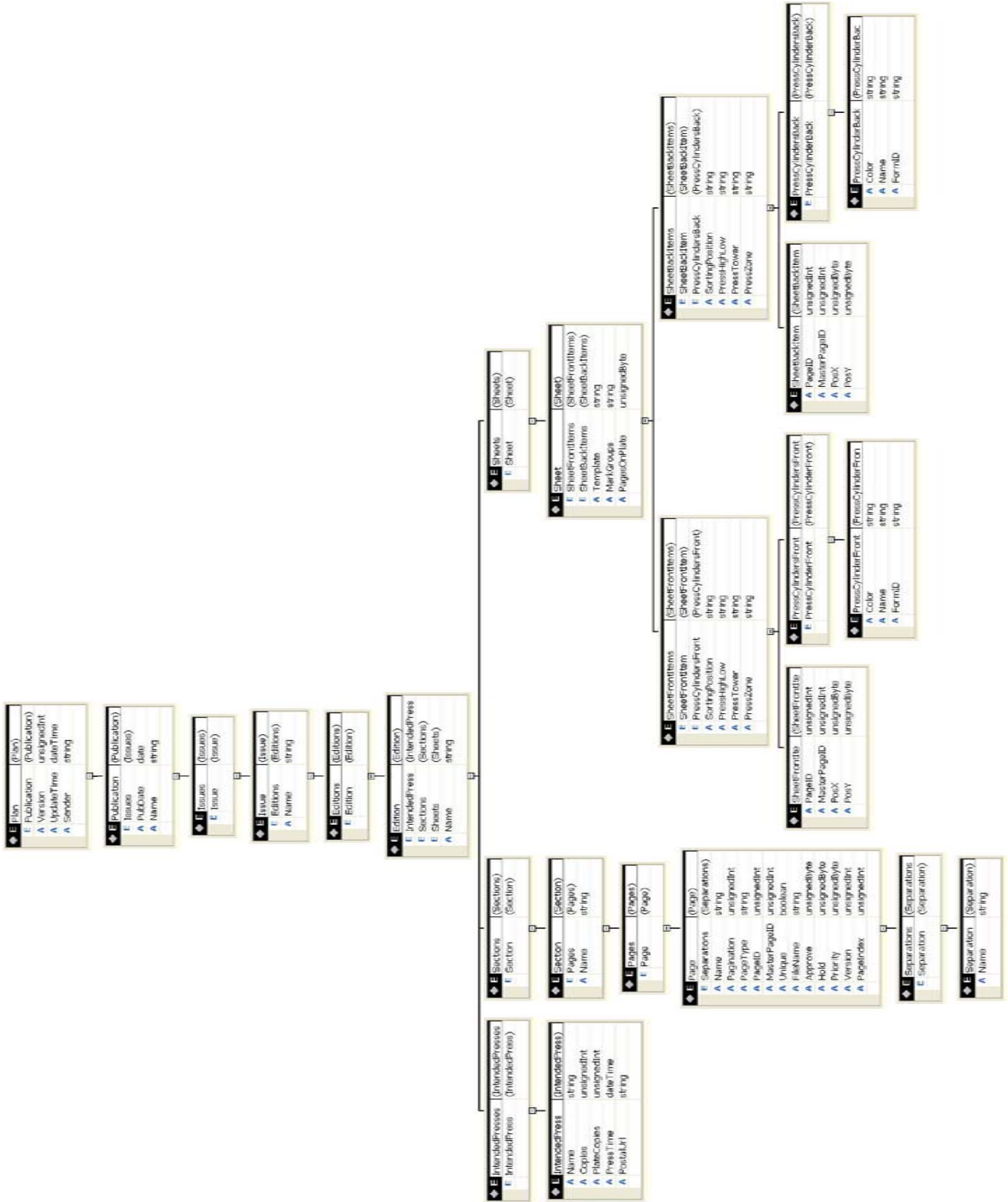
PlateCopies	Integer	Number of plate copies per output. Default is 1.	X
Copies	Integer	Number of paper copies to print	
PressTime	DateTime	Time of press start (format YYYY-MM-DDTHH-mm-SS)	
Page Element			
Attribute	Type	Description	Mandatory
Name	String (max size 32)	Pagename as expected in page file name (tiff-name), Usually a number, but may be a name string – e.g. 'ix' or 'ixx'	X
Pagination	Integer	Page number as integer running through all combined sections (running numbers)	
PageIndex	Integer	Alternative page number (integer) usually like Pagename. Used in ControlCenter for sorting	
PageType	String	Normal: Normal page Panorama: Spread	X
Unique	Boolean	true: Page must be produced false: Page is a common-page in sub-edition force: Page are common but must be produced	X
PageID	String	Unique reference ID for the page.	X
MasterPageID	String	Reference to main edition page name. Used for non-unique pages	X
Comment	String (max size 32)	Any comment linked to the page	
FileName	String (max size 48)	Complete custom name of page used instead of standard page naming	
Priority	Integer	Page priority 0:lowest, 100: Highest	
Version	Integer	Page update count	
Approve	Integer	0: Page must be approved -1 or 1: Page does not require approval	
Hold	Integer	1: Page is initially put on production hold	
Separation attributes			
Attribute	Type	Description	Mandatory
Name	String	Color name	X
Sheet attributes			
Attribute	Type	Description	Mandatory
Template	String	Reference to ControlCenter layout template define front and back	X
PagesOnPlate	Integer	Number of pages imposed on each side of the sheet (imposition type)	X
MarkGroups	String	List of option mark names to include in this sheet. Corresponds to template option marks defined in ControlCenter	
PressSectionNumber	Integer	Print sequence number for multi-pressrun products	
SheetFrontItems/SheetBackItems attributes			
Attribute	Type	Description	Mandatory
SortingPosition	String (max size 8)	Plate stacker controlling name	

PressTower	String (max size 8)	Name of press tower	
PressZone	String (max size 8)	Name of press cylinder zone (eg. L or R)	
PressHighLow	String (max size 8)	Name of press high/low position (typ. for collect mode)	
SheetFrontItem/SheetBackItem attributes			
Attribute	Type	Description	Mandatory
PageID	String	Reference name for Page as defined in the Page Elements	X
MasterPageID	String	Reference name to unique (physically) page in the Page Elements. For unique pages this attribute is the same as PageID	X
PosX	Integer	Horizontal position of this page (1: Left)	X
PosY	String	Vertical position of this page (1: Top)	X
PressCylinderFront/ PressCylinderBack element attributes			
Attribute	Type	Description	Mandatory
Color	String	Color name	X
Name	String (max size 8)	Press cylinder name	
FormID	String	Optional name for the plate	
PlateID	Comma separated string	Optional name for each plate copy Plate copies are comma separated	

5.3 XML data types

A number of standard and custom data types are used for attribute data.

Datatype	Description
<i>integer</i>	Number – positive, negative or 0
<i>positiveInteger</i>	Positive number including 0
<i>nonNegativeInteger</i>	Positive number excluding 0
<i>PagesOnPlateInt</i>	Number between 1 and 64
<i>PageTypeEnum</i>	"Normal": Normal page "Panorama": Panorama page (no opposite/right page exists) "Dummy": Dummy/dinky page
<i>boolean</i>	true or false
<i>string</i>	Text string – may be empty string
<i>nonemptystring</i>	Text string – may not be empty string
<i>date</i>	Date in format YYYY-MM-DD (e.g. 2005-12-25)
<i>datetime</i>	Timestamp in format YYYY-MM-DDT HH-mm-SS . e.g. "2005-03-18T09:55:32"



XSD schema for ImportCenter XML format depicted graphically

6 Appendix A XML Schema

```

<?xml version="1.0" encoding="utf-8"?>
<xs:schema attributeFormDefault="unqualified" elementFormDefault="qualified" xmlns:xs="http://www.w3.org/2001/XMLSchema">
  <xs:element name="Plan">
    <xs:complexType>
      <xs:sequence>
        <xs:element name="Publication">
          <xs:complexType>
            <xs:sequence>
              <xs:element name="Issues">
                <xs:complexType>
                  <xs:sequence>
                    <xs:element name="Issue">
                      <xs:complexType>
                        <xs:sequence>
                          <xs:element name="Editions">
                            <xs:complexType>
                              <xs:sequence>
                                <xs:element maxOccurs="unbounded" name="Edition">
                                  <xs:complexType>
                                    <xs:sequence>
                                      <xs:element name="IntendedPresses">
                                        <xs:complexType>
                                          <xs:sequence>
                                            <xs:element name="IntendedPress">
                                              <xs:complexType>
                                                <xs:attribute name="Name" type="xs:string" use="required" />
                                                <xs:attribute name="Copies" type="xs:unsignedInt" use="optional" />
                                                <xs:attribute name="PlateCopies" type="xs:unsignedInt" use="required" />
                                                <xs:attribute name="PressTime" type="xs:dateTime" use="optional" />
                                                <xs:attribute name="PostalUrl" type="xs:string" use="optional" />
                                              </xs:complexType>
                                            </xs:element>
                                          </xs:sequence>
                                        </xs:complexType>
                                      </xs:element>
                                    </xs:sequence>
                                  </xs:complexType>
                                </xs:element>
                              </xs:sequence>
                            </xs:complexType>
                          </xs:element>
                        </xs:sequence>
                      </xs:complexType>
                    </xs:element>
                  </xs:sequence>
                </xs:complexType>
              </xs:element>
            </xs:sequence>
          </xs:complexType>
        </xs:element>
      </xs:sequence>
    </xs:complexType>
  </xs:element>
  <xs:element name="Sections">
    <xs:complexType>
      <xs:sequence>
        <xs:element maxOccurs="unbounded" name="Section">
          <xs:complexType>
            <xs:sequence>
              <xs:element name="Pages">
                <xs:complexType>
                  <xs:sequence>
                    <xs:element maxOccurs="unbounded" name="Page">
                      <xs:complexType>

```

```

        <xs:sequence>
          <xs:element name="Separations">
            <xs:complexType>
              <xs:sequence>
                <xs:element maxOccurs="unbounded" name="Separation">
                  <xs:complexType>
                    <xs:attribute name="Name" type="xs:string" use="required" />
                  </xs:complexType>
                </xs:element>
              </xs:sequence>
            </xs:complexType>
          </xs:element>
        </xs:sequence>
        <xs:attribute name="Name" type="xs:string" use="required" />
        <xs:attribute name="Pagination" type="xs:unsignedInt" use="optional" />
        <xs:attribute name="PageType" type="xs:string" use="required" />
        <xs:attribute name="PageID" type="xs:unsignedInt" use="required" />
        <xs:attribute name="MasterPageID" type="xs:unsignedInt" use="required" />
        <xs:attribute name="Unique" type="xs:boolean" use="required" />
        <xs:attribute name="FileName" type="xs:string" use="optional" />
        <xs:attribute name="Approve" type="xs:unsignedByte" use="optional" />
        <xs:attribute name="Hold" type="xs:unsignedByte" use="optional" />
        <xs:attribute name="Priority" type="xs:unsignedByte" use="optional" />
        <xs:attribute name="Version" type="xs:unsignedInt" use="optional" />
        <xs:attribute name="PageIndex" type="xs:unsignedInt" use="optional" />
      </xs:complexType>
    </xs:element>
  </xs:sequence>
</xs:complexType>
</xs:element>
</xs:sequence>
<xs:attribute name="Name" type="xs:string" use="required" />
</xs:complexType>
</xs:element>
</xs:sequence>
</xs:complexType>
</xs:element>
<xs:element name="Sheets">
  <xs:complexType>
    <xs:sequence>
      <xs:element maxOccurs="unbounded" name="Sheet">
        <xs:complexType>
          <xs:sequence>
            <xs:element name="SheetFrontItems">
              <xs:complexType>
                <xs:sequence>
                  <xs:element maxOccurs="unbounded" name="SheetFrontItem">
                    <xs:complexType>
                      <xs:attribute name="PageID" type="xs:unsignedInt" use="required" />
                      <xs:attribute name="MasterPageID" type="xs:unsignedInt" use="required" />
                      <xs:attribute name="PosX" type="xs:unsignedByte" use="required" />
                      <xs:attribute name="PosY" type="xs:unsignedByte" use="required" />
                    </xs:complexType>
                  </xs:element>
                </xs:sequence>
              </xs:complexType>
            </xs:element>
          </xs:sequence>
        </xs:complexType>
      </xs:element>
    </xs:sequence>
  </xs:complexType>
</xs:element>

```

```

    </xs:complexType>
  </xs:element>
  <xs:element name="PressCylindersFront">
    <xs:complexType>
      <xs:sequence>
        <xs:element maxOccurs="unbounded" name="PressCylinderFront">
          <xs:complexType>
            <xs:attribute name="Color" type="xs:string" use="required" />
            <xs:attribute name="Name" type="xs:string" use="optional" />
            <xs:attribute name="FormID" type="xs:string" use="optional" />
          </xs:complexType>
        </xs:element>
      </xs:sequence>
    </xs:complexType>
  </xs:element>
  <xs:attribute name="SortingPosition" type="xs:string" use="optional" />
  <xs:attribute name="PressHighLow" type="xs:string" use="optional" />
  <xs:attribute name="PressTower" type="xs:string" use="optional" />
  <xs:attribute name="PressZone" type="xs:string" use="optional" />
</xs:complexType>
</xs:element>
<xs:element name="SheetBackItems">
  <xs:complexType>
    <xs:sequence>
      <xs:element maxOccurs="unbounded" name="SheetBackItem">
        <xs:complexType>
          <xs:attribute name="PageID" type="xs:unsignedInt" use="required" />
          <xs:attribute name="MasterPageID" type="xs:unsignedInt" use="required" />
          <xs:attribute name="PosX" type="xs:unsignedByte" use="required" />
          <xs:attribute name="PosY" type="xs:unsignedByte" use="required" />
        </xs:complexType>
      </xs:element>
      <xs:element name="PressCylindersBack">
        <xs:complexType>
          <xs:sequence>
            <xs:element maxOccurs="unbounded" name="PressCylinderBack">
              <xs:complexType>
                <xs:attribute name="Color" type="xs:string" use="required" />
                <xs:attribute name="Name" type="xs:string" use="optional" />
                <xs:attribute name="FormID" type="xs:string" use="optional" />
              </xs:complexType>
            </xs:element>
          </xs:sequence>
        </xs:complexType>
      </xs:element>
    </xs:sequence>
    <xs:attribute name="SortingPosition" type="xs:string" use="optional" />
    <xs:attribute name="PressHighLow" type="xs:string" use="optional" />
    <xs:attribute name="PressTower" type="xs:string" use="optional" />
    <xs:attribute name="PressZone" type="xs:string" use="optional" />
  </xs:complexType>

```

```
        </xs:element>
      </xs:sequence>
      <xs:attribute name="Template" type="xs:string" use="required" />
      <xs:attribute name="MarkGroups" type="xs:string" use="optional" />
      <xs:attribute name="PagesOnPlate" type="xs:unsignedByte" use="required" />
    </xs:complexType>
  </xs:element>
</xs:sequence>
</xs:complexType>
</xs:element>
</xs:sequence>
<xs:attribute name="Name" type="xs:string" use="required" />
</xs:complexType>
</xs:element>
</xs:sequence>
</xs:complexType>
</xs:element>
</xs:sequence>
<xs:attribute name="Name" type="xs:string" use="required" />
</xs:complexType>
</xs:element>
</xs:sequence>
</xs:complexType>
</xs:element>
</xs:sequence>
<xs:attribute name="PubDate" type="xs:date" use="required" />
<xs:attribute name="Name" type="xs:string" use="required" />
</xs:complexType>
</xs:element>
</xs:sequence>
<xs:attribute name="Version" type="xs:unsignedInt" use="required" />
<xs:attribute name="UpdateTime" type="xs:dateTime" use="required" />
<xs:attribute name="Sender" type="xs:string" use="required" />
</xs:complexType>
</xs:element>
</xs:schema>
```

7 Appendix B XML Example

```

<?xml version="1.0" encoding="utf-8" ?>
<Plan Version="1" UpdateTime="2005-03-18T09:55:32" Sender="Whoever" >
  <Publication PubDate="2005-04-04" Name="News" WeekReference="0">
    <Issues>
      <Issue Name="Main">
        <Editions>
          <Edition Name="Main" IsTimed="false">
            <IntendedPresses>
              <IntendedPress Name="Press1" Copies="10000" PlateCopies="1" PostalUrl="ftp://xyz.se/x.txt" PressTime="2005-04-03T01:00:00" />
            </IntendedPresses>
            <Sections>
              <Section Name="A">
                <Pages>
                  <Page Name="1" Pagination="1" PageType="Normal" PageID="1" MasterPageID="1" Unique="true" FileName="News-M-A001-0404"
Approve="1" Hold="1" Priority="50" Version="1" PageIndex="1">
                    <Separations>
                      <Separation Name="C" />
                      <Separation Name="M" />
                      <Separation Name="Y" />
                      <Separation Name="K" />
                    </Separations>
                  </Page>
                  <Page Name="2" Pagination="2" PageType="Normal" PageID="2" MasterPageID="2" Unique="true" FileName="News-M-A002-0404"
Approve="1" Hold="1" Priority="50" Version="1" PageIndex="2">
                    <Separations>
                      <Separation Name="C" />
                      <Separation Name="M" />
                      <Separation Name="Y" />
                      <Separation Name="K" />
                    </Separations>
                  </Page>
                  <Page Name="3" Pagination="3" PageType="Normal" PageID="3" MasterPageID="3" Unique="true" FileName="News-M-A003-0404"
Approve="1" Hold="1" Priority="50" Version="1" PageIndex="3">
                    <Separations>
                      <Separation Name="C" />
                      <Separation Name="M" />
                      <Separation Name="Y" />
                      <Separation Name="K" />
                    </Separations>
                  </Page>
                  <Page Name="4" Pagination="4" PageType="Normal" PageID="4" MasterPageID="4" Unique="true" FileName="News-M-A004-0404"
Approve="1" Hold="1" Priority="50" Version="1" PageIndex="4">
                    <Separations>
                      <Separation Name="C" />
                      <Separation Name="M" />

```

```
<Separation Name="Y" />
<Separation Name="K" />
</Separations>
</Page>
<Page Name="5" Pagination="5" PageType="Normal" PageID="5" MasterPageID="5" Unique="true" FileName="News-M-A005-0404"
Approve="1" Hold="1" Priority="50" Version="1" PageIndex="13">
<Separations>
<Separation Name="C" />
<Separation Name="M" />
<Separation Name="Y" />
<Separation Name="K" />
</Separations>
</Page>
<Page Name="6" Pagination="6" PageType="Normal" PageID="6" MasterPageID="6" Unique="true" FileName="News-M-A006-0404"
Approve="1" Hold="1" Priority="50" Version="1" PageIndex="14">
<Separations>
<Separation Name="C" />
<Separation Name="M" />
<Separation Name="Y" />
<Separation Name="K" />
</Separations>
</Page>
<Page Name="7" Pagination="7" PageType="Normal" PageID="7" MasterPageID="7" Unique="true" FileName="News-M-A007-0404"
Approve="1" Hold="1" Priority="50" Version="1" PageIndex="15">
<Separations>
<Separation Name="C" />
<Separation Name="M" />
<Separation Name="Y" />
<Separation Name="K" />
</Separations>
</Page>
<Page Name="8" Pagination="8" PageType="Normal" PageID="8" MasterPageID="8" Unique="true" FileName="News-M-A008-0404"
Approve="1" Hold="1" Priority="50" Version="1" PageIndex="16">
<Separations>
<Separation Name="C" />
<Separation Name="M" />
<Separation Name="Y" />
<Separation Name="K" />
</Separations>
</Page>
</Pages>
</Section>
<Section Name="B">
<Pages>
<Page Name="1" Pagination="1" PageType="Normal" PageID="9" MasterPageID="9" Unique="true" FileName="News-M-B001-0404"
Approve="1" Hold="1" Priority="50" Version="1" PageIndex="5">
<Separations>
<Separation Name="C" />
<Separation Name="M" />
<Separation Name="Y" />
<Separation Name="K" />
</Separations>
```

```
</Page>
<Page Name="2" Pagination="2" PageType="Normal" PageID="10" MasterPageID="10" Unique="true" FileName="News-M-B002-0404"
Approve="1" Hold="1" Priority="50" Version="1" PageIndex="6">
  <Separations>
    <Separation Name="K" />
  </Separations>
</Page>
<Page Name="3" Pagination="3" PageType="Normal" PageID="11" MasterPageID="11" Unique="true" FileName="News-M-B003-0404"
Approve="1" Hold="1" Priority="50" Version="1" PageIndex="7">
  <Separations>
    <Separation Name="C" />
    <Separation Name="M" />
    <Separation Name="Y" />
    <Separation Name="K" />
  </Separations>
</Page>
<Page Name="4" Pagination="4" PageType="Normal" PageID="12" MasterPageID="12" Unique="true" FileName="News-M-B004-0404"
Approve="1" Hold="1" Priority="50" Version="1" PageIndex="8">
  <Separations>
    <Separation Name="C" />
    <Separation Name="M" />
    <Separation Name="Y" />
    <Separation Name="K" />
  </Separations>
</Page>
<Page Name="5" Pagination="5" PageType="Normal" PageID="13" MasterPageID="13" Unique="true" FileName="News-M-B005-0404"
Approve="1" Hold="1" Priority="50" Version="1" PageIndex="9">
  <Separations>
    <Separation Name="C" />
    <Separation Name="M" />
    <Separation Name="Y" />
    <Separation Name="K" />
  </Separations>
</Page>
<Page Name="6" Pagination="6" PageType="Normal" PageID="14" MasterPageID="14" Unique="true" FileName="News-M-B006-0404"
Approve="1" Hold="1" Priority="50" Version="1" PageIndex="10">
  <Separations>
    <Separation Name="C" />
    <Separation Name="M" />
    <Separation Name="Y" />
    <Separation Name="K" />
  </Separations>
</Page>
<Page Name="7" Pagination="7" PageType="Normal" PageID="15" MasterPageID="15" Unique="true" FileName="News-M-B007-0404"
Approve="1" Hold="1" Priority="50" Version="1" PageIndex="11">
  <Separations>
    <Separation Name="C" />
    <Separation Name="M" />
    <Separation Name="Y" />
    <Separation Name="K" />
  </Separations>
</Page>
```



```

    <Page Name="8" Pagination="8" PageType="Normal" PageID="16" MasterPageID="16" Unique="true" FileName="News-M-B008-0404"
Approve="1" Hold="1" Priority="50" Version="1" PageIndex="12">
    <Separations>
        <Separation Name="C" />
        <Separation Name="M" />
        <Separation Name="Y" />
        <Separation Name="K" />
    </Separations>
    </Page>
</Pages>
</Section>
</Sections>
<Sheets>
    <Sheet Template="Paired broadsheet" MarkGroups="1" PagesOnPlate="2">
        <SheetFrontItems SortingPosition="A" PressHighLow="" PressTower="" PressZone="">
            <SheetFrontItem PageID="8" MasterPageID="8" PosX="1" PosY="1" />
            <SheetFrontItem PageID="1" MasterPageID="1" PosX="2" PosY="1" />
            <PressCylindersFront>
                <PressCylinderFront Color="C" Name="" FormID="" />
                <PressCylinderFront Color="M" Name="" FormID="" />
                <PressCylinderFront Color="Y" Name="" FormID="" />
                <PressCylinderFront Color="K" Name="" FormID="" />
            </PressCylindersFront>
        </SheetFrontItems>
        <SheetBackItems SortingPosition="B" PressHighLow="" PressTower="" PressZone="">
            <SheetBackItem PageID="2" MasterPageID="2" PosX="1" PosY="1" />
            <SheetBackItem PageID="7" MasterPageID="7" PosX="2" PosY="1" />
            <PressCylindersBack>
                <PressCylinderBack Color="C" Name="" FormID="" />
                <PressCylinderBack Color="M" Name="" FormID="" />
                <PressCylinderBack Color="Y" Name="" FormID="" />
                <PressCylinderBack Color="K" Name="" FormID="" />
            </PressCylindersBack>
        </SheetBackItems>
    </Sheet>
    <Sheet Template="Paired broadsheet" MarkGroups="1" PagesOnPlate="2">
        <SheetFrontItems SortingPosition="A" PressHighLow="" PressTower="" PressZone="">
            <SheetFrontItem PageID="6" MasterPageID="6" PosX="1" PosY="1" />
            <SheetFrontItem PageID="3" MasterPageID="3" PosX="2" PosY="1" />
            <PressCylindersFront>
                <PressCylinderFront Color="C" Name="" FormID="" />
                <PressCylinderFront Color="M" Name="" FormID="" />
                <PressCylinderFront Color="Y" Name="" FormID="" />
                <PressCylinderFront Color="K" Name="" FormID="" />
            </PressCylindersFront>
        </SheetFrontItems>
        <SheetBackItems SortingPosition="B" PressHighLow="" PressTower="" PressZone="">
            <SheetBackItem PageID="4" MasterPageID="4" PosX="1" PosY="1" />
            <SheetBackItem PageID="5" MasterPageID="5" PosX="2" PosY="1" />
            <PressCylindersBack>
                <PressCylinderBack Color="C" Name="" FormID="" />
                <PressCylinderBack Color="M" Name="" FormID="" />
            </PressCylindersBack>
        </SheetBackItems>
    </Sheet>

```

```

        <PressCylinderBack Color="Y" Name="" FormID="" />
        <PressCylinderBack Color="K" Name="" FormID="" />
    </PressCylindersBack>
</SheetBackItems>
</Sheet>
<Sheet Template="Paired broadsheet" MarkGroups="1" PagesOnPlate="2">
    <SheetFrontItems SortingPosition="C" PressHighLow="" PressTower="" PressZone="">
        <SheetFrontItem PageID="16" MasterPageID="16" PosX="1" PosY="1" />
        <SheetFrontItem PageID="9" MasterPageID="9" PosX="2" PosY="1" />
    <PressCylindersFront>
        <PressCylinderFront Color="C" Name="" FormID="" />
        <PressCylinderFront Color="M" Name="" FormID="" />
        <PressCylinderFront Color="Y" Name="" FormID="" />
        <PressCylinderFront Color="K" Name="" FormID="" />
    </PressCylindersFront>
</SheetFrontItems>
    <SheetBackItems SortingPosition="D" PressHighLow="" PressTower="" PressZone="">
        <SheetBackItem PageID="10" MasterPageID="10" PosX="1" PosY="1" />
        <SheetBackItem PageID="15" MasterPageID="15" PosX="2" PosY="1" />
    <PressCylindersBack>
        <PressCylinderBack Color="C" Name="" FormID="" />
        <PressCylinderBack Color="M" Name="" FormID="" />
        <PressCylinderBack Color="Y" Name="" FormID="" />
        <PressCylinderBack Color="K" Name="" FormID="" />
    </PressCylindersBack>
</SheetBackItems>
</Sheet>
<Sheet Template="Paired broadsheet" MarkGroups="1" PagesOnPlate="2">
    <SheetFrontItems SortingPosition="C" PressHighLow="" PressTower="" PressZone="">
        <SheetFrontItem PageID="14" MasterPageID="14" PosX="1" PosY="1" />
        <SheetFrontItem PageID="11" MasterPageID="11" PosX="2" PosY="1" />
    <PressCylindersFront>
        <PressCylinderFront Color="C" Name="" FormID="" />
        <PressCylinderFront Color="M" Name="" FormID="" />
        <PressCylinderFront Color="Y" Name="" FormID="" />
        <PressCylinderFront Color="K" Name="" FormID="" />
    </PressCylindersFront>
</SheetFrontItems>
    <SheetBackItems SortingPosition="D" PressHighLow="" PressTower="" PressZone="">
        <SheetBackItem PageID="12" MasterPageID="12" PosX="1" PosY="1" />
        <SheetBackItem PageID="13" MasterPageID="13" PosX="2" PosY="1" />
    <PressCylindersBack>
        <PressCylinderBack Color="C" Name="" FormID="" />
        <PressCylinderBack Color="M" Name="" FormID="" />
        <PressCylinderBack Color="Y" Name="" FormID="" />
        <PressCylinderBack Color="K" Name="" FormID="" />
    </PressCylindersBack>
</SheetBackItems>
</Sheet>
</Sheets>
</Edition>
<Edition Name="South" IsTimed="false">

```

```
<IntendedPresses>
  <IntendedPress Name="Press2" Copies="5000" PlateCopies="1" PostalUrl="ftp://xyz.se/file.txt" />
</IntendedPresses>
<Sections>
  <Section Name="A">
    <Pages>
      <Page Name="1" Pagination="1" PageType="Normal" PageID="17" MasterPageID="17" Unique="true" FileName="News-S-A001-0404"
Approve="1" Hold="1" Priority="50" Version="1" PageIndex="1">
        <Separations>
          <Separation Name="C" />
          <Separation Name="M" />
          <Separation Name="Y" />
          <Separation Name="K" />
        </Separations>
      </Page>
      <Page Name="2" Pagination="2" PageType="Normal" PageID="18" MasterPageID="2" Unique="false" FileName="News-S-A002-0404"
Approve="1" Hold="1" Priority="50" Version="1" PageIndex="2">
        <Separations>
          <Separation Name="C" />
          <Separation Name="M" />
          <Separation Name="Y" />
          <Separation Name="K" />
        </Separations>
      </Page>
      <Page Name="3" Pagination="3" PageType="Normal" PageID="19" MasterPageID="3" Unique="false" FileName="News-S-A003-0404"
Approve="1" Hold="1" Priority="50" Version="1" PageIndex="3">
        <Separations>
          <Separation Name="C" />
          <Separation Name="M" />
          <Separation Name="Y" />
          <Separation Name="K" />
        </Separations>
      </Page>
      <Page Name="4" Pagination="4" PageType="Normal" PageID="20" MasterPageID="4" Unique="false" FileName="News-S-A004-0404"
Approve="1" Hold="1" Priority="50" Version="1" PageIndex="4">
        <Separations>
          <Separation Name="C" />
          <Separation Name="M" />
          <Separation Name="Y" />
          <Separation Name="K" />
        </Separations>
      </Page>
      <Page Name="5" Pagination="5" PageType="Normal" PageID="21" MasterPageID="5" Unique="false" FileName="News-S-A005-0404"
Approve="1" Hold="1" Priority="50" Version="1" PageIndex="13">
        <Separations>
          <Separation Name="C" />
          <Separation Name="M" />
          <Separation Name="Y" />
          <Separation Name="K" />
        </Separations>
      </Page>
    </Pages>
  </Section>
</Sections>
```

```
<Page Name="6" Pagination="6" PageType="Normal" PageID="22" MasterPageID="6" Unique="false" FileName="News-S-A006-0404"
Approve="1" Hold="1" Priority="50" Version="1" PageIndex="14">
  <Separations>
    <Separation Name="C" />
    <Separation Name="M" />
    <Separation Name="Y" />
    <Separation Name="K" />
  </Separations>
</Page>
<Page Name="7" Pagination="7" PageType="Normal" PageID="23" MasterPageID="7" Unique="false" FileName="News-S-A007-0404"
Approve="1" Hold="1" Priority="50" Version="1" PageIndex="15">
  <Separations>
    <Separation Name="C" />
    <Separation Name="M" />
    <Separation Name="Y" />
    <Separation Name="K" />
  </Separations>
</Page>
<Page Name="8" Pagination="8" PageType="Normal" PageID="24" MasterPageID="8" Unique="false" FileName="News-S-A008-0404"
Approve="1" Hold="1" Priority="50" Version="1" PageIndex="16">
  <Separations>
    <Separation Name="C" />
    <Separation Name="M" />
    <Separation Name="Y" />
    <Separation Name="K" />
  </Separations>
</Page>
</Pages>
</Section>
<Section Name="B">
  <Pages>
    <Page Name="1" Pagination="1" PageType="Normal" PageID="25" MasterPageID="9" Unique="false" FileName="News-S-B001-0404"
Approve="1" Hold="1" Priority="50" Version="1" PageIndex="5">
      <Separations>
        <Separation Name="C" />
        <Separation Name="M" />
        <Separation Name="Y" />
        <Separation Name="K" />
      </Separations>
    </Page>
    <Page Name="2" Pagination="2" PageType="Normal" PageID="26" MasterPageID="26" Unique="true" FileName="News-S-B002-0404"
Approve="1" Hold="1" Priority="50" Version="1" PageIndex="6">
      <Separations>
        <Separation Name="K" />
      </Separations>
    </Page>
    <Page Name="3" Pagination="3" PageType="Normal" PageID="27" MasterPageID="11" Unique="false" FileName="News-S-B003-0404"
Approve="1" Hold="1" Priority="50" Version="1" PageIndex="7">
      <Separations>
        <Separation Name="C" />
        <Separation Name="M" />
        <Separation Name="Y" />
      </Separations>
    </Page>
  </Pages>
</Section>
```

```
<Separation Name="K" />
</Separations>
</Page>
<Page Name="4" Pagination="4" PageType="Normal" PageID="28" MasterPageID="12" Unique="false" FileName="News-S-B004-0404"
Approve="1" Hold="1" Priority="50" Version="1" PageIndex="8">
<Separations>
<Separation Name="C" />
<Separation Name="M" />
<Separation Name="Y" />
<Separation Name="K" />
</Separations>
</Page>
<Page Name="5" Pagination="5" PageType="Normal" PageID="29" MasterPageID="13" Unique="false" FileName="News-S-B005-0404"
Approve="1" Hold="1" Priority="50" Version="1" PageIndex="9">
<Separations>
<Separation Name="C" />
<Separation Name="M" />
<Separation Name="Y" />
<Separation Name="K" />
</Separations>
</Page>
<Page Name="6" Pagination="6" PageType="Normal" PageID="30" MasterPageID="14" Unique="false" FileName="News-S-B006-0404"
Approve="1" Hold="1" Priority="50" Version="1" PageIndex="10">
<Separations>
<Separation Name="C" />
<Separation Name="M" />
<Separation Name="Y" />
<Separation Name="K" />
</Separations>
</Page>
<Page Name="7" Pagination="7" PageType="Normal" PageID="31" MasterPageID="15" Unique="false" FileName="News-S-B007-0404"
Approve="1" Hold="1" Priority="50" Version="1" PageIndex="11">
<Separations>
<Separation Name="C" />
<Separation Name="M" />
<Separation Name="Y" />
<Separation Name="K" />
</Separations>
</Page>
<Page Name="8" Pagination="8" PageType="Normal" PageID="32" MasterPageID="16" Unique="false" FileName="News-S-B008-0404"
Approve="1" Hold="1" Priority="50" Version="1" PageIndex="12">
<Separations>
<Separation Name="C" />
<Separation Name="M" />
<Separation Name="Y" />
<Separation Name="K" />
</Separations>
</Page>
</Pages>
</Section>
</Sections>
<Sheets>
```

```

<Sheet Template="Paired broadsheet" MarkGroups="1" PagesOnPlate="2">
  <SheetFrontItems SortingPosition="A" PressHighLow="" PressTower="" PressZone="">
    <SheetFrontItem PageID="24" MasterPageID="8" PosX="1" PosY="1" />
    <SheetFrontItem PageID="17" MasterPageID="17" PosX="2" PosY="1" />
    <PressCylindersFront>
      <PressCylinderFront Color="C" Name="" FormID="" />
      <PressCylinderFront Color="M" Name="" FormID="" />
      <PressCylinderFront Color="Y" Name="" FormID="" />
      <PressCylinderFront Color="K" Name="" FormID="" />
    </PressCylindersFront>
  </SheetFrontItems>
  <SheetBackItems SortingPosition="B" PressHighLow="" PressTower="" PressZone="">
    <SheetBackItem PageID="18" MasterPageID="2" PosX="1" PosY="1" />
    <SheetBackItem PageID="23" MasterPageID="7" PosX="2" PosY="1" />
    <PressCylindersBack>
      <PressCylinderBack Color="C" Name="" FormID="" />
      <PressCylinderBack Color="M" Name="" FormID="" />
      <PressCylinderBack Color="Y" Name="" FormID="" />
      <PressCylinderBack Color="K" Name="" FormID="" />
    </PressCylindersBack>
  </SheetBackItems>
</Sheet>
<Sheet Template="Paired broadsheet" MarkGroups="1" PagesOnPlate="2">
  <SheetFrontItems SortingPosition="A" PressHighLow="" PressTower="" PressZone="">
    <SheetFrontItem PageID="22" MasterPageID="6" PosX="1" PosY="1" />
    <SheetFrontItem PageID="19" MasterPageID="3" PosX="2" PosY="1" />
    <PressCylindersFront>
      <PressCylinderFront Color="C" Name="" FormID="" />
      <PressCylinderFront Color="M" Name="" FormID="" />
      <PressCylinderFront Color="Y" Name="" FormID="" />
      <PressCylinderFront Color="K" Name="" FormID="" />
    </PressCylindersFront>
  </SheetFrontItems>
  <SheetBackItems SortingPosition="B" PressHighLow="" PressTower="" PressZone="">
    <SheetBackItem PageID="20" MasterPageID="4" PosX="1" PosY="1" />
    <SheetBackItem PageID="21" MasterPageID="5" PosX="2" PosY="1" />
    <PressCylindersBack>
      <PressCylinderBack Color="C" Name="" FormID="" />
      <PressCylinderBack Color="M" Name="" FormID="" />
      <PressCylinderBack Color="Y" Name="" FormID="" />
      <PressCylinderBack Color="K" Name="" FormID="" />
    </PressCylindersBack>
  </SheetBackItems>
</Sheet>
<Sheet Template="Paired broadsheet" MarkGroups="1" PagesOnPlate="2">
  <SheetFrontItems SortingPosition="C" PressHighLow="" PressTower="" PressZone="">
    <SheetFrontItem PageID="32" MasterPageID="16" PosX="1" PosY="1" />
    <SheetFrontItem PageID="25" MasterPageID="9" PosX="2" PosY="1" />
    <PressCylindersFront>
      <PressCylinderFront Color="C" Name="" FormID="" />
      <PressCylinderFront Color="M" Name="" FormID="" />
      <PressCylinderFront Color="Y" Name="" FormID="" />
    </PressCylindersFront>
  </SheetFrontItems>

```

```
<PressCylinderFront Color="K" Name="" FormID="" />
</PressCylindersFront>
</SheetFrontItems>
<SheetBackItems SortingPosition="D" PressHighLow="" PressTower="" PressZone="">
  <SheetBackItem PageID="26" MasterPageID="26" PosX="1" PosY="1" />
  <SheetBackItem PageID="31" MasterPageID="15" PosX="2" PosY="1" />
  <PressCylindersBack>
    <PressCylinderBack Color="C" Name="" FormID="" />
    <PressCylinderBack Color="M" Name="" FormID="" />
    <PressCylinderBack Color="Y" Name="" FormID="" />
    <PressCylinderBack Color="K" Name="" FormID="" />
  </PressCylindersBack>
</SheetBackItems>
</Sheet>
<Sheet Template="Paired broadsheet" MarkGroups="1" PagesOnPlate="2">
  <SheetFrontItems SortingPosition="C" PressHighLow="" PressTower="" PressZone="">
    <SheetFrontItem PageID="30" MasterPageID="14" PosX="1" PosY="1" />
    <SheetFrontItem PageID="27" MasterPageID="11" PosX="2" PosY="1" />
    <PressCylindersFront>
      <PressCylinderFront Color="C" Name="" FormID="" />
      <PressCylinderFront Color="M" Name="" FormID="" />
      <PressCylinderFront Color="Y" Name="" FormID="" />
      <PressCylinderFront Color="K" Name="" FormID="" />
    </PressCylindersFront>
  </SheetFrontItems>
  <SheetBackItems SortingPosition="D" PressHighLow="" PressTower="" PressZone="">
    <SheetBackItem PageID="28" MasterPageID="12" PosX="1" PosY="1" />
    <SheetBackItem PageID="29" MasterPageID="13" PosX="2" PosY="1" />
    <PressCylindersBack>
      <PressCylinderBack Color="C" Name="" FormID="" />
      <PressCylinderBack Color="M" Name="" FormID="" />
      <PressCylinderBack Color="Y" Name="" FormID="" />
      <PressCylinderBack Color="K" Name="" FormID="" />
    </PressCylindersBack>
  </SheetBackItems>
</Sheet>
</Sheets>
</Edition>
</Editions>
</Issue>
</Issues>
</Publication>
</Plan>
```